



LSU

Social Research & Evaluation Center

The LSU Social Research and Evaluation Center (SREC) works to foster healthy social systems. SREC designs, implements, and evaluates community and social programs. Our expertise ranges from conducting rigorous research to providing consultation to the university, community, policy makers, and partners. We work collaboratively and tailor projects to match the needs of our clients and our community.

PROGRAM EVALUATION

COMMUNITY OUTREACH

DATA ANALYSIS

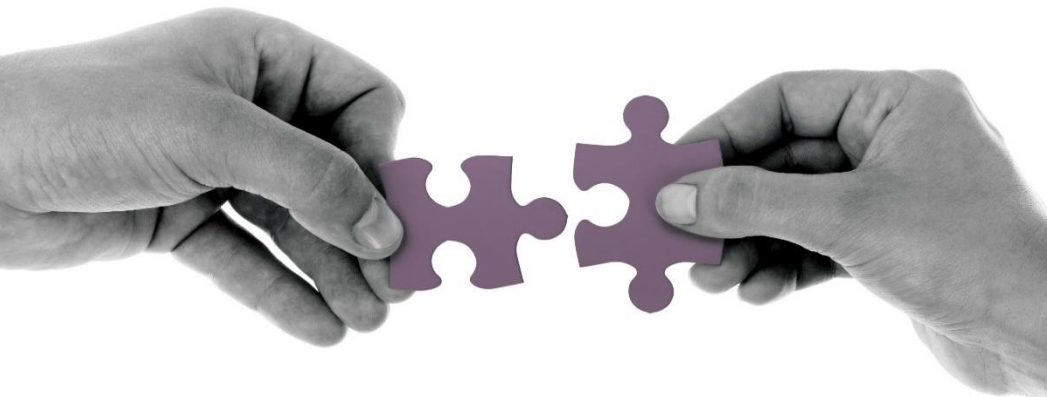
PROFESSIONAL TRAINING

LSU

Social Research & Evaluation Center

College of Human Science & Education
Louisiana State University, Baton Rouge, LA 70803
Phone: 225-578-4899 | Email: srec@lsu.edu

LSU.EDU/SREC



LSU EXPERTISE AT WORK FOR YOU

CONNECTING YOUR ORGANIZATION TO THE RESEARCH RESOURCES YOU NEED

LSU SREC OFFERS:

CUSTOM SOLUTIONS



LSU SREC researchers and faculty have a proven record of successfully working with diverse problems and challenges to provide custom solutions that match the needs of our clients and our community.

EXPERT SOLUTIONS



LSU SREC researchers and faculty conduct innovative research and evidence-informed practices using a wide variety of university resources: multidisciplinary experts, scholarly access, and graduate student project support.

COMMUNITY SOLUTIONS



LSU SREC is mission focused and uses research approaches that aim to improve urgent social problems.

ABOUT OUR SERVICES

SREC researchers and faculty have knowledge and skills in a wide range of areas including health and well-being, education, public safety, and strengthening communities.

PROGRAM EVALUATION

- Developmental, process, and outcome/impact evaluation
- Program fidelity monitoring
- Needs assessment and asset mapping
- Evaluation capacity building
- Community-based participatory evaluation

DATA AND ANALYTICS

- Statistical and qualitative analysis
- Developing and managing databases
- GIS mapping and spatial analysis
- Data visualization
- Cost-benefit analysis

TRAINING AND OUTREACH

- Outreach and community engagement
- Professional development
- Grant consulting and proposal writing
- Continuing education credits workshops

ADVANCING KNOWLEDGE

- Intervention and action research
- Evidence-informed practice
- Surveys and data collection tools
- Qualitative and quantitative/mixed research methods
- Fostering cooperation between academic experts, policymakers, agencies, practitioners, and funders