

# Geology of the Buhler 7.5-Minute Quadrangle, LA

*Louisiana Geological Survey*

## Introduction, Location, and Geologic Setting

The Buhler 7.5-minute quadrangle lies in the southwestern portion of the south Louisiana coastal plain (Figure 1), in the drainage basin of the Calcasieu River. The quadrangle lies at the northern edge of the Gulf Coast salt basin, near the southern edge of coast-parallel outcrop belts of terraced Pleistocene strata comprising Intermediate, Prairie, and Deweyville allogroups (Lissie and Beaumont alloformations, and Deweyville Allogroup undifferentiated, respectively). Its surface consists exclusively of Holocene and terraced Pleistocene strata (Figure 2) deposited by the Sabine, Red, and Calcasieu rivers. All these strata consist of terrigenous sediment with varying proportions of sand, silt, mud, and/or gravel.

Features developed on the surface of the Beaumont Alloformation comprise the Houston ridge, easternmost segment of the Ingleside barrier trend (Figure 2), and other coastal ridges of potentially diverse origins; one set of prominent coastal ridges within the study area appears to comprise relict natural levees of either the Sabine River or a minor intrabasinal stream. The area is transected by the traces of growth faults reactivated since the late Pliocene by depositional loading induced by voluminous sedimentation accompanying continental deglaciation (Heinrich, 2005; McCulloh and Heinrich, 2012).

The units recognized and mapped in this investigation are summarized in Figures 3 and 4.

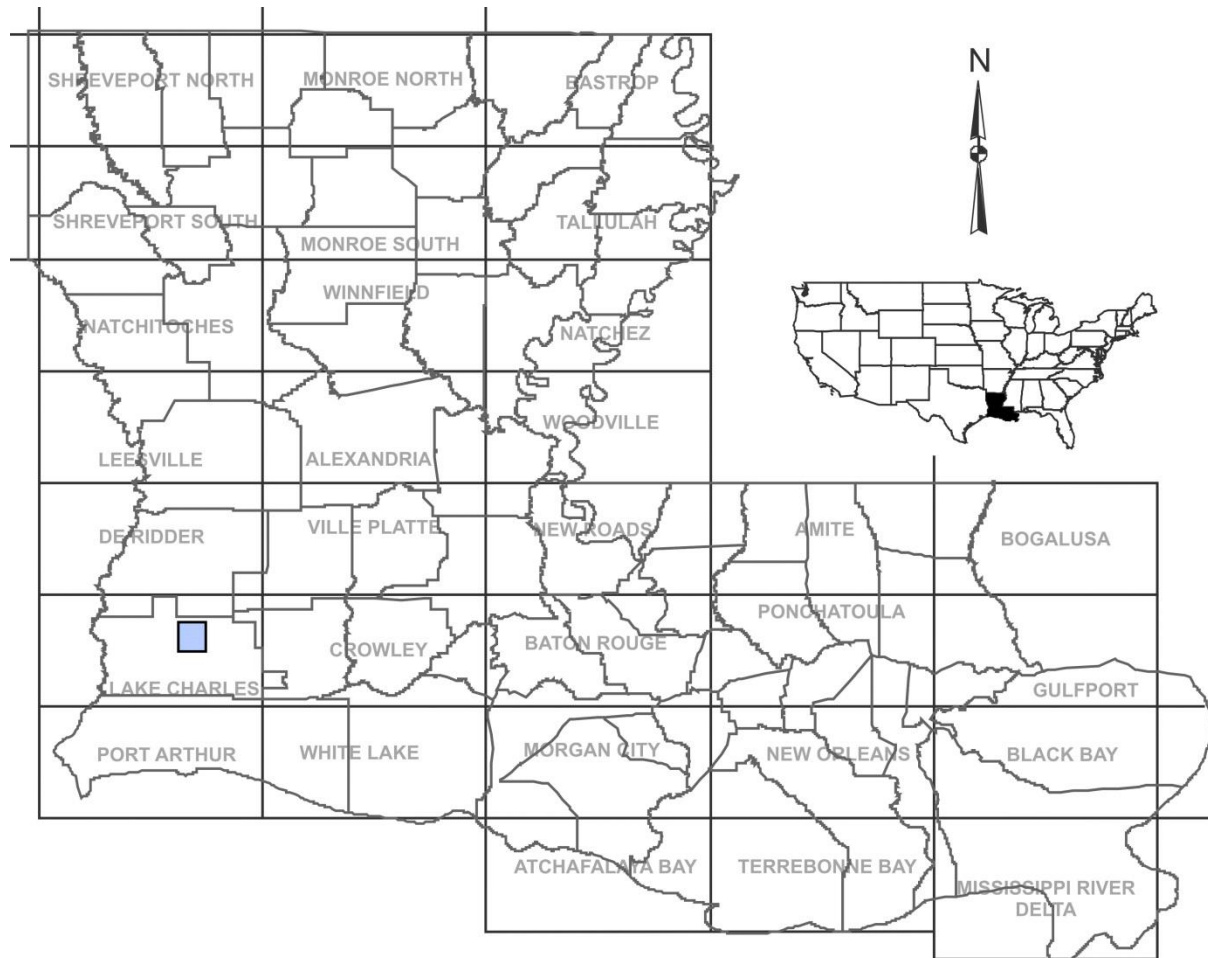
## Previous Work

The Buhler quadrangle lies in the central portion of the eastern half of the Lake Charles 30 × 60 minute quadrangle, the surface geology of which was compiled at 1:100,000 scale by Heinrich et al. (2002) with STATEMAP support. Prior to this investigation, the basic framework of surface geology of the region encompassing the quadrangles was rendered at approximately 1:1,056,000 scale by Jones et al. (1954, their plate I) drawing in part upon unpublished work by Fisk (1948), and was summarized by Aronow (1986) for Calcasieu Parish. The regional framework later was updated at 1:1,100,000 scale in the compilation by Saucier and Snead (1989). Following the STATEMAP-supported compilation by Heinrich et al. (2002), Heinrich (2005) conducted further mapping of surface faults in this and surrounding areas. Heinrich (2007) summarized the geology of the Houston ridge based on previous investigations, including those by Graf (1966), Barrilleaux (1986), and Winker (1991). Groundwater conditions in the Chicot aquifer were detailed in numerous previous investigations conducted in the Lake Charles area, including Harder et al. (1967), Zack (1971), Haque (1984), and Milner and Fisher (2009).

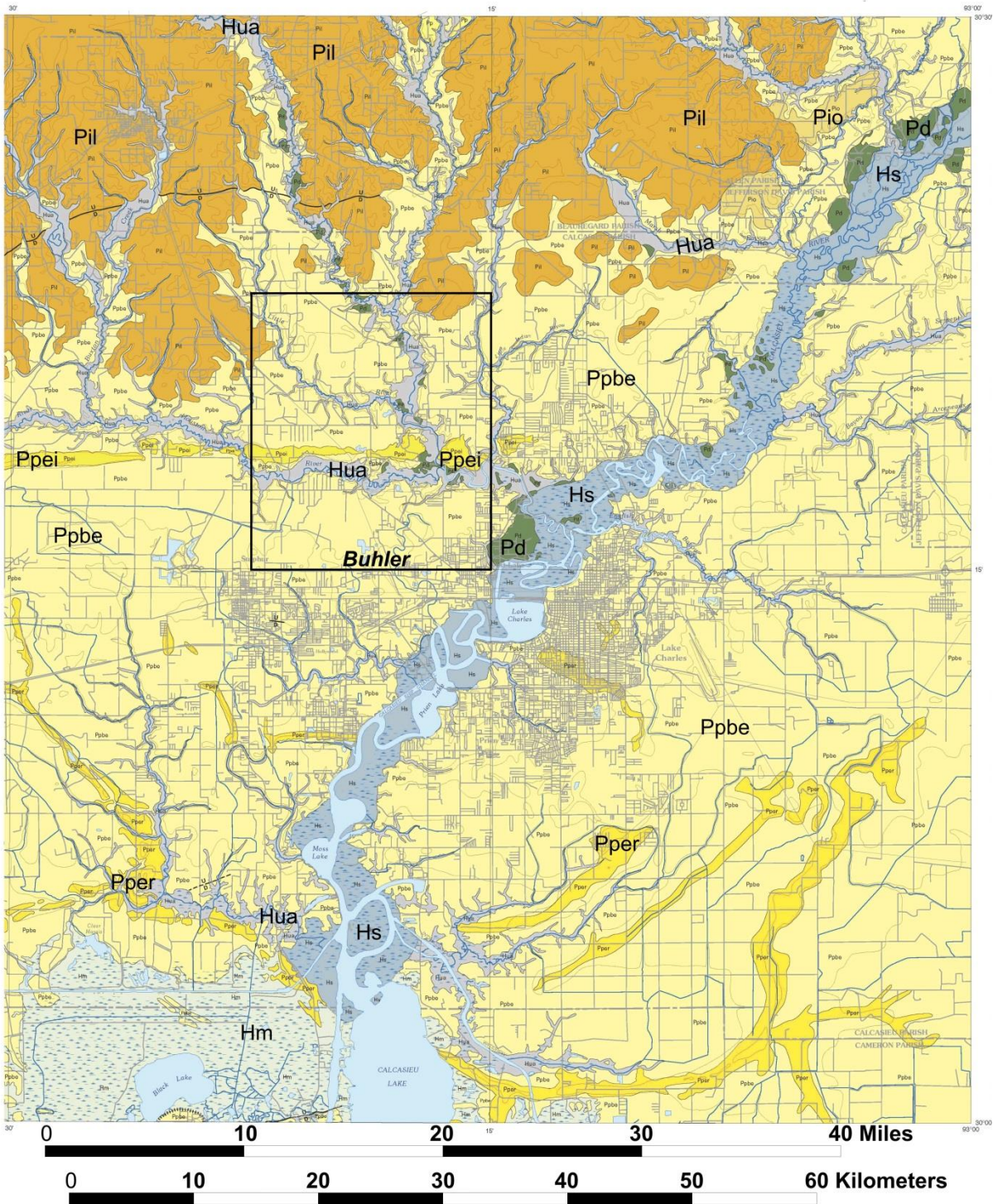
## Methods

The investigators reviewed legacy information and made new interpretations consulting remotely sensed imagery (comprising aerial photography, LIDAR DEMs, and other sources) and soils databases published by the Natural Resources Conservation Service (NRCS) to develop a draft surface geology layer for the study area. Field work was conducted to test the subsoil with hand-operated probes and examine and sample the texture and composition of the surface-geologic map units. Field observations were then synthesized with the draft

surface geology to prepare an updated integrated surface geology layer for the 7.5-minute quadrangle.



1. Location of Buhler 7.5-minute quadrangle, southwestern Louisiana.



2. Surface geology of the area encompassing the Buhler 7.5-minute quadrangle (excerpted and adapted from Heinrich et al., 2002). (**Pil**, Lissie Alloformation, undifferentiated; **Pio**, Oakdale alloformation; **Ppbe**, Beaumont Alloformation; **Ppei**, Relict Pleistocene barrier ridge (Houston ridge); **Pper**, Relict Pleistocene ridges; **Pd**, Deweyville Allogroup, undifferentiated; **Hm**, Mermentau Alloformation; **Hs**, Small river deposits, undifferentiated; **Hua**, Holocene undifferentiated alluvium).

QUATERNARY SYSTEM

HOLOCENE

Hua Holocene undifferentiated alluvium

PLEISTOCENE

DEWEYVILLE ALLOGROUP

Pd Deweyville Allogroup, undifferentiated

PRAIRIE ALLOGROUP

Ppei Relict Pleistocene barrier ridge (Houston ridge)

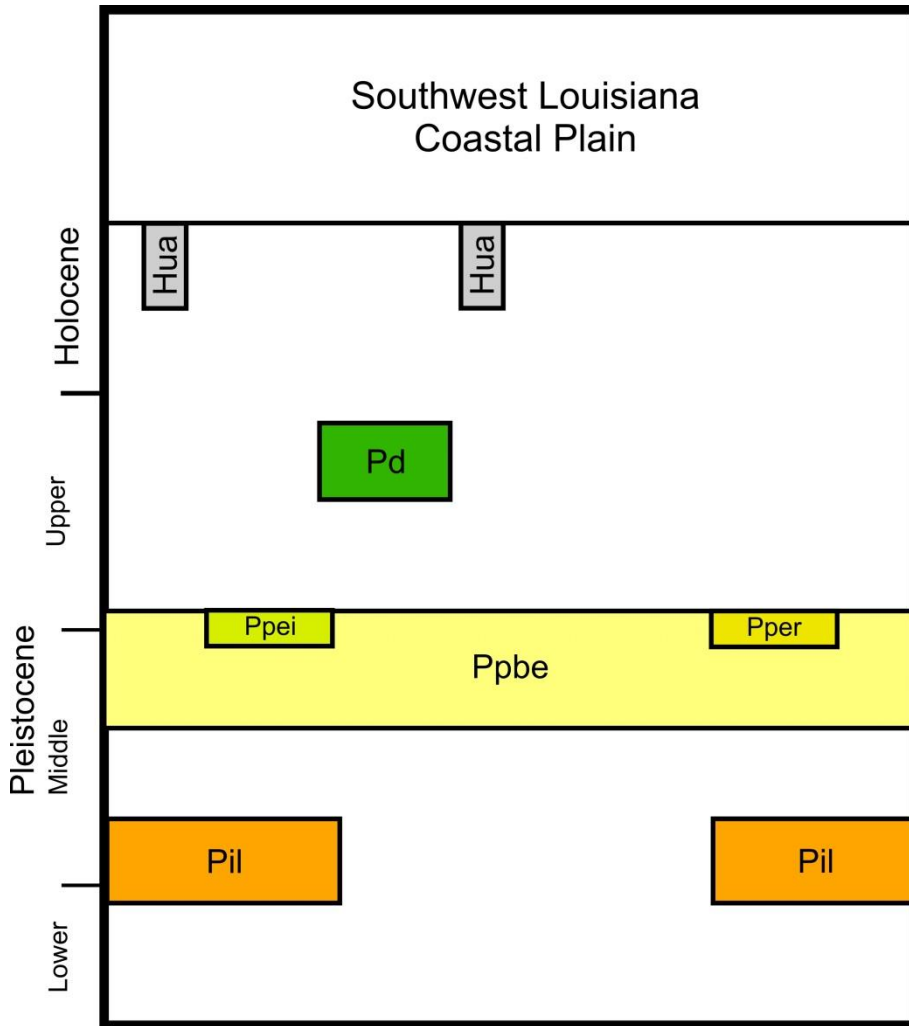
Pper Relict Pleistocene ridges

Ppbe Beaumont Alloformation

INTERMEDIATE ALLOGROUP

Pil Lissie Alloformation, undifferentiated

3. Units mapped in the Buhler 7.5-minute quadrangle.



4. Correlation of strata mapped in the Buhler 7.5-minute quadrangle.



## **Allostratigraphic Approach to Pleistocene Unit Definitions**

In the late 1980s the LGS had begun exploring the application of allostratigraphic concepts and nomenclature to the mapping of surface Plio–Pleistocene units (e.g., Autin, 1988). In Louisiana these units show a series of geomorphic attributes and preservation states correlative with their relative ages, which eventually led LGS to conclude that allostratigraphy offers an effective if not essential approach to their delineation and classification (McCulloh et al., 2003). The Plio–Pleistocene strata for which allostratigraphic nomenclature presently has value to LGS all are situated updip of the hinge zone of northern Gulf basin subsidence, and show a clear spectrum of preservation from pristine younger strata to trace relicts and remnants of older strata persisting in the coastal outcrop belt and on high ridgetops in places updip of it. Allunit nomenclature has figured heavily in the STATEMAP-funded geologic mapping projects of the past two decades because Quaternary strata occupy approximately three-fourths of the surface of Louisiana. The preponderance of Quaternary strata in the present study area dictated continuation of this practice for this investigation.

### **Lissie Alloformation (Intermediate Allogroup)**

The Lissie Alloformation is an unconformity-bounded stratigraphic unit that is separated from the underlying Willis Formation and the overlying Beaumont Alloformation by regional unconformities that have been defined and mapped by Young et al. (2012). Beneath this part of Louisiana coastal plain, these authors found that the Lissie Alloformation consists predominantly of 120–140 m (~395–460 ft) of dip-oriented fluvial sands surrounded by interchannel muds. Gulfward, these sediments grade downdip into shore-parallel sands and muds. These sediments accumulated as short depositional episodes during multiple high-frequency glacio-eustatic sea-level fluctuations. The lower and upper contacts of the Lissie Alloformation are regionally extensive and laterally extensive flooding surfaces that are correlated with micropaleontological zones offshore and updip as far as possible. These flooding surfaces were correlated toward the outcrop along the bases of major channel sands (Young et al., 2012). In the case of the upper contact, it becomes the surface of the Lissie Alloformation within and northward of the Buhler quadrangle. The surface of the Lissie Alloformation has been dissected and lost the majority of its original depositional features. According to downdip correlations by Young et al. (2012), the Lissie Alloformation accumulated between 1.4 and 0.6 Ma.

### **Beaumont Alloformation (Prairie Allogroup)**

The Beaumont Alloformation is an unconformity-bounded stratigraphic unit. It is separated from the underlying Lissie Alloformation by a regional unconformity that has been defined and mapped by Young et al. (2012). Except where cut by valleys formed during sea level lowstands of the last glacial epoch, the upper boundary of the Beaumont Alloformation within the study area consists of the surface of the coastal plain. The Beaumont Alloformation consists of 30 to 60 m (~100–200 ft) of clay-rich sediments transected by dip-oriented fluvial sands and sandy deltaic-distributary channels. It also includes an isolated segment of a coast-parallel, sandy beach ridge known as the Ingleside barrier/strandplain system (Barrilleaux, 1986). These sediments accumulated as short depositional episodes during multiple high-frequency glacio-eustatic sea-level fluctuations. The lower contact of the Beaumont Alloformation is a regionally and laterally extensive flooding surface that was

correlated with micropaleontological zones offshore and updip as far as possible. These sediments accumulated as short depositional episodes during multiple high-frequency glacio-eustatic sea-level fluctuations. The lower contact of the Beaumont Alloformation is a regionally extensive and laterally extensive flooding surface that is correlated with micropaleontological zones offshore and updip as far as possible. This flooding surface is correlated northward along the bases of major channel sands to where it crops out and the Beaumont Alloformation onlaps the surface of the Lissie Alloformation (Young et al. 2012). According to downdip correlations by Young et al. (2012), the Lissie Alloformation accumulated after 0.6 Ma. The surface of the Beaumont Alloformation exhibits moderately well preserved relict depositional topography of the Sabine, Red, and other rivers and the Ingleside shoreline (Aronow, 1986).

### **Deweyville Allogroup**

The Deweyville Allogroup consists of largely coarse-grained fluvial sediments that fill the valleys of the Calcasieu and Houston rivers and their tributaries. It consists of separate unconformity-bounded allostratigraphic units with terraces as their upper boundaries and fluvial entrenchment surfaces as their lower boundaries. The coarse-grained valley fills of the Deweyville Allogroup represent (a), the abandonment and entrenchment of valleys within the Beaumont alluvial plains by river systems ca. 100 ka; and (b), multiple episodes of lateral migration, aggradation, and/or degradation within those valleys during the Marine Isotope Stages 4, 3, and 2. These fluvial systems were graded to shorelines at midshelf or farther south (Blum et al., 1995). The sediments of the Deweyville Alloformation are separated from younger undifferentiated Holocene fluvial and estuarine sediments by a flooding surface created by the accumulation of sediment during postglacial sea level rise and by local erosion surfaces created by the postglacial lateral migration of streams and rivers.

### **Summary of Results**

The Pleistocene strata comprise units of the Intermediate, Prairie, and Deweyville allogroups, and consist of sediment deposited by the Sabine and Red rivers and by coastal processes. The Lissie Alloformation, Intermediate allogroup, and the Beaumont Alloformation, Prairie Allogroup, form part of a coast-parallel belt of terraced Pleistocene strata. Coastal ridges developed on the surface of the Beaumont Alloformation comprise a barrier trend (Houston ridge, eastern terminus of the Ingleside trend of Texas) and ridges interpreted as fluvial in origin. Deweyville Allogroup strata occur along the Calcasieu River valley and its tributaries, where they form low terraces. This investigation recognized less Deweyville than previously mapped by Heinrich et al. (2002). Holocene strata comprise undifferentiated alluvium of the Calcasieu River and its tributaries.

Detailed mapping of features developed on the surface of the Beaumont Alloformation should be applicable, in combination with subsurface data, to the prediction of sand resource occurrence and groundwater contamination susceptibility (Houston ridge), and for sand and gravel potential (other coastal ridges).

### **Acknowledgments**

The work described and summarized herein was supported by the National Cooperative Geologic Mapping Program, STATEMAP component, under cooperative agreement G14AC00222 with the U.S. Geological Survey.

## References

- Aronow, S., 1986, Surface geology of Calcasieu Parish: Louisiana Geological Survey, Open-file report, no. 04-01 (prepared from unpublished report on file with U. S. Department of Agriculture, Natural Resource Conservation Service, Alexandria, Louisiana).
- Autin, W. J., 1988, Mapping alloformations in the Amite River, southeastern Louisiana: Geological Society of America Abstracts with Programs, v. 20, no. 4, p. 252.
- Barrilleaux, J., 1986, The geomorphology and Quaternary history of the Houston barrier segment of the Ingleside strandplain, Calcasieu Parish, Louisiana: M.S. thesis, University of Southwestern Louisiana, Lafayette.
- Blum, M. D., R. A. Morton, and J. M. Durbin, 1995, "Deweyville" terraces and deposits of the Texas Gulf Coastal Plain: Gulf Coast Association of Geological Societies Transactions, v. 45, p. 53-60.
- Fisk, H. N., 1948, Geological investigation of the lower Mermentau River basin and adjacent areas in coastal Louisiana: unpublished "Definite project report," Mermentau River, Louisiana, Appendix II, U.S. Army Corps of Engineers, Mississippi River Commission, Vicksburg.
- Graf, C. H., 1966, The late Pleistocene Ingleside barrier trend, Texas and Louisiana: M.S. thesis, Rice University, Houston, Texas.
- Haque, S. M., 1984, Ground-water quality in the Lake Charles area, Louisiana: Louisiana Geological Survey, Water resources series no. 2, 57 p.
- Harder, A. H., C. Kilburn, H. M. Whitman, and S. M. Rogers, 1967, Effects of ground-water withdrawals on water levels and salt-water encroachment in southwestern Louisiana: Louisiana Department of Conservation, Louisiana Geological Survey, Water resources bulletin no. 10, 56 p. plus plates.
- Heinrich, P. V., 2007, The Houston ridge: an ancient shoreline in Calcasieu Parish, Louisiana: Louisiana Geological Survey NewsInsights, v. 17, no. 1, p. 1-4.
- Heinrich, P. V., 2005, Distribution and origin of fault-line scarps of southwest Louisiana, USA: Gulf Coast Association of Geological Societies Transactions, v. 55, p. 284-293.
- Heinrich, P. V., J. Snead, and R. P. McCulloh (compilers), 2002, Lake Charles 30 × 60 Minute Geologic Quadrangle: Louisiana Geological Survey, Baton Rouge, Scale 1:100,000.
- Jones, P. H., A. N. Turcan, Jr., and H. E. Skibitzke, 1954, Geology and ground-water resources of southwestern Louisiana: Louisiana Department of Conservation, Louisiana Geological Survey, Geological bulletin no. 30, 285 p. plus plates.
- McCulloh, R. P., and P. V. Heinrich, 2012, Surface faults of the south Louisiana growth-fault province, in Cox, R. T., M. P. Tuttle, O. S. Boyd, and J. Locat, eds., Recent Advances in

North American Paleoseismology and Neotectonics East of the Rockies: Geological Society of America Special Paper 493, p. 37–50, doi:10.1130/2012.2493(03).

McCulloh, R. P., Heinrich, P. V., and Snead, J. I., 2003, Geology of the Ville Platte Quadrangle, Louisiana: Louisiana Geological Survey, Geological Pamphlet no. 14, 11 p.

Milner, L. R., and C. Fisher, 2009, Geological characterization of the Chicot/Atchafalaya aquifer region: southwest Louisiana: Louisiana Geological Survey, Water resources series no. 4, 39 p.

Saucier, R. T., and J. I. Snead (compilers), 1989, Quaternary geology of the Lower Mississippi Valley, *in* Morrison, R. B., ed., Quaternary nonglacial geology: Conterminous U. S.: Boulder, Colorado, Geological Society of America, The Geology of North America, v. K–2, Plate 6, scale 1:1,100,000.

Winker, C. D. (compiler), 1991, Quaternary geology, northwestern Gulf Coast, *in* Morrison, R. B., ed., Quaternary nonglacial geology: Conterminous U. S.: Boulder, Colorado, Geological Society of America, The Geology of North America, v. K–2, Plate 8, scale 1: 2,000,000.

Young, S. C., T. Ewing, S. Hamlin, E. Baker, and D. Lupin, 2012, Updating the hydrogeologic framework for the northern portion of the Gulf Coast Aquifer (final report): Texas Water Development Board, Austin, Texas, 283 p.

Zack, A. L., 1971, Ground-water pumpage and related effects, southwestern Louisiana, 1970 with a section on surface-water withdrawals: Louisiana Department of Conservation, Louisiana Geological Survey, Water resources pamphlet no. 27, 33 p. plus plates.